

**SHARE
YOUR
VOICE**

**SHAPE
YOUR
SCHOOL**

Take the Diverse Learning Environments Survey

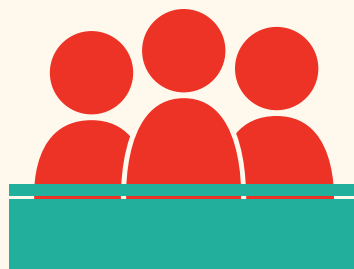
Your responses help shape

With your insight, we're able to assess our campus climate and implement the change necessary to create an environment in which all students can be successful.

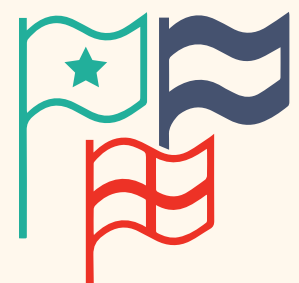
Did you know?



Frequently discussed issues related to sexism, gender differences, or gender equity



Attended debates or panels about diversity issues



Interacted with someone from a different country

Share your experience:
